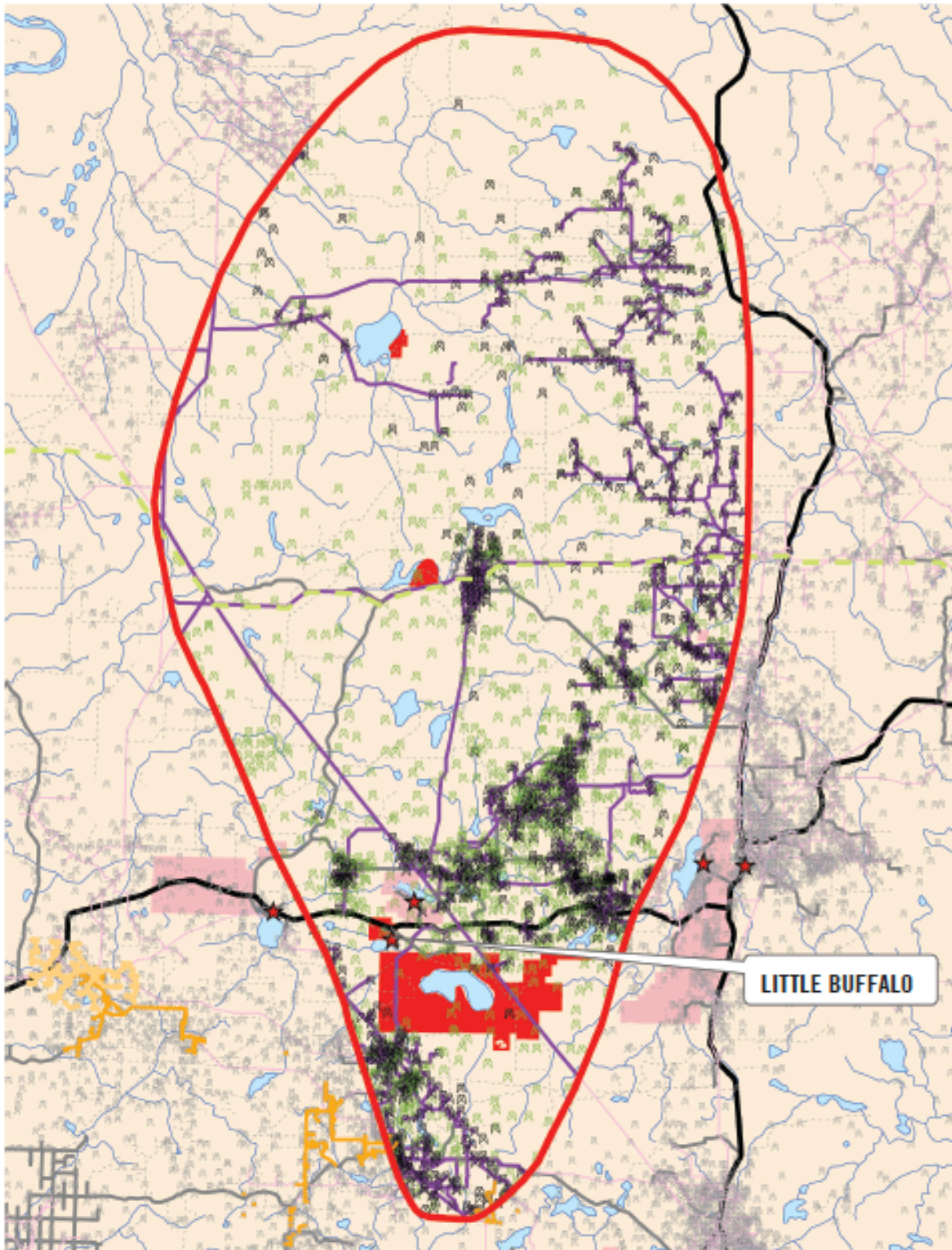


# OIL AND GAS DEVELOPMENT ON LUBICON LAND



As of December 2008

- Oil and Gas Wells: 2,684
- Active Wells 1,305
- Capped Wells 1,379
- North-Central Corridor Pipeline ~ 94.5 linear km
- Other Pipelines ~2,366 linear km
- In-Situ Oil Sands Projects
- Proposed In-Situ Oil Sands Projects

- Arterial Roads ~ 69.2 linear km
- Secondary Roads ~ 439.9 linear km
- Resource/Recreation Roads ~ 4,092.1 linear km
- Lubicon Cree Traditional Territory
- Proposed Lubicon Reserve Lands
- Other First Nations reserves

Map Projection: Alberta 10TM  
 Data sources: Government of Alberta, Abacus  
 Datagraphics, IHS, GlobalForestWatch.ca,  
 GeoGratis and GeoBase, NRCan  
 Some data digitized by David Flanders  
 Cartography: Czer Environmental Services



[www.amnesty.ca/lubicon](http://www.amnesty.ca/lubicon)